

L. PARKER STEPHENSON  
PHOTOGRAPHS

**RAY MORTENSON: MEADOWLAND**

September 15 – November 26, 2016

1. **Ray MORTENSON** (b. 1944)  
Pitt Consol Chemicals, Newark #2, 1979  
Gelatin silver print, printed 1979-1981  
Paper size: 10 5/8 x 12 7/8 inches  
Image size: 6 1/2 x 8 3/4 inches  
Signed, titled and dated in pencil on print verso.  
(P2718RM)
2. **Ray MORTENSON** (b. 1944)  
Hudson Generating Station, Jersey City, #1, 1979  
Gelatin silver print, printed 1979-1981  
Paper size: 10 5/8 x 12 7/8 inches  
Image size: 6 1/2 x 8 3/4 inches  
Signed, titled and dated in pencil on print verso.  
(P2694RM)
3. **Ray MORTENSON** (b. 1944)  
Boylan Road, Harrison, 1980  
Gelatin silver print, printed 1980-1981  
Paper size: 10 5/8 x 12 7/8 inches  
Image size: 6 1/2 x 8 3/4 inches  
Signed, titled and dated in pencil on print verso.  
(P2713RM)
4. **Ray MORTENSON** (b. 1944)  
DuPont Chemicals, Linden, 1979  
Gelatin silver print, printed 1979-1981  
Paper size: 10 5/8 x 12 7/8 inches  
Image size: 6 1/2 x 8 3/4 inches  
Signed, titled and dated in pencil on print verso.  
(P2706RM)



5. **Ray MORTENSON** (b. 1944)  
Sherwin Williams, #2, 1980  
Gelatin silver print, printed 1980-1981  
Paper size: 10 5/8 x 12 7/8 inches  
Image size: 6 1/2 x 8 3/4 inches  
Signed, titled and dated in pencil on print verso.  
(P2705RM)



6. **Ray MORTENSON** (b. 1944)  
Standard Chlorine, Kearny, 1979  
Gelatin silver print, printed 1980-1981  
Paper size: 10 5/8 x 12 7/8 inches  
Image size: 6 1/2 x 8 3/4 inches  
Signed, titled and dated in pencil on print verso.  
(P2710RM)



7. **Ray MORTENSON** (b. 1944)  
Worthington Pump, Harrison, 1980  
Gelatin silver print, printed 1980-1981  
Paper size: 10 5/8 x 12 7/8 inches  
Image size: 6 1/2 x 8 3/4 inches  
Signed, titled and dated in pencil on print verso.  
(P2709RM)



8. **Ray MORTENSON** (b. 1944)  
South Kearny Terminal, Kearny, 1980  
Gelatin silver print, printed 1980-1981  
Paper size: 10 5/8 x 12 7/8 inches  
Image size: 6 1/2 x 8 3/4 inches  
Signed, titled and dated in pencil on print verso.  
(P2700RM)



9. **Ray MORTENSON** (b. 1944)  
Conrail Passenger Yards, Harrison, 1980  
Gelatin silver print, printed 1980-1981  
Paper size: 10 5/8 x 12 7/8 inches  
Image size: 6 1/2 x 8 3/4 inches  
Signed, titled and dated in pencil on print verso.  
(P2705RM)



10. **Ray MORTENSON** (b. 1944)  
Aim Industries, Jersey City, 1980  
Gelatin silver print, printed 1980-1981  
Paper size: 10 5/8 x 12 7/8 inches  
Image size: 6 1/2 x 8 3/4 inches  
Signed, titled and dated in pencil on print verso.  
(P2708RM)



11. **Ray MORTENSON** (b. 1944)  
Sherwin Williams, Newark #1, 1980  
Gelatin silver print, printed 1980-1981  
Paper size: 10 5/8 x 12 7/8 inches  
Image size: 6 1/2 x 8 3/4 inches  
Signed, titled and dated in pencil on print verso.  
(P2704RM)



12. **Ray MORTENSON** (b. 1944)  
Hudson Generating Station, Jersey City, #1, 1979  
Gelatin silver print, printed 1979-1981  
Paper size: 10 5/8 x 12 7/8 inches  
Image size: 6 1/2 x 8 3/4 inches  
Signed, titled and dated in pencil on print verso.  
(P2700RM)



13. **Ray MORTENSON** (b. 1944)  
Monsanto, Kearny, 1980  
Gelatin silver print, printed 1980-1981  
Paper size: 10 5/8 x 12 7/8 inches  
Image size: 6 3/8 x 8 3/4 inches  
Signed, titled and dated in pencil on print verso.  
(P2727RM)



14. **Ray MORTENSON** (b. 1944)  
Pitt-Consol Chemicals, Newark #1, 1979  
Gelatin silver print, printed 1979-1981  
Paper size: 10 5/8 x 12 7/8 inches  
Image size: 6 1/2 x 8 3/4 inches  
Signed, titled and dated in pencil on print verso.  
(P2696RM)



15. **Ray MORTENSON** (b. 1944)  
Conrail Meadows Yards, Kearny, 1980  
Gelatin silver print, printed 1980-1981  
Paper size: 10 5/8 x 12 7/8 inches  
Image size: 6 3/8 x 8 3/4 inches  
Signed, titled and dated in pencil on print verso.  
(P2715RM)



16. **Ray MORTENSON** (b. 1944)  
Paterson Planck Road, East Rutherford, 1979  
Gelatin silver print, printed 1979-1981  
Paper size: 10 5/8 x 12 7/8 inches  
Image size: 6 1/2 x 8 3/4 inches  
Signed, titled and dated in pencil on print verso.  
(P2716RM)



17. **Ray MORTENSON** (b. 1944)  
Frank Creek, Harrison, 1980  
Gelatin silver print, printed 1980-1981  
Paper size: 10 5/8 x 12 7/8 inches  
Image size: 6 1/2 x 8 3/4 inches  
Signed, titled and dated in pencil on print verso.  
(P2717RM)



18. **Ray MORTENSON** (b. 1944)  
Marshes Dock, Linden, 1979  
Gelatin silver print, printed 1979-1981  
Paper size: 10 5/8 x 12 7/8 inches  
Image size: 6 3/8 x 8 3/4 inches  
Signed, titled and dated in pencil on print verso.  
(P2711RM)



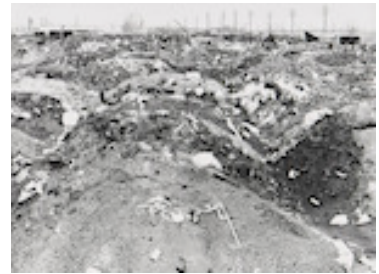
19. **Ray MORTENSON** (b. 1944)  
Celanese Chemicals, Newark #2, 1979  
Gelatin silver print, printed 1979-1981  
Paper size: 10 5/8 x 12 7/8 inches  
Image size: 6 1/2 x 8 3/4 inches  
Signed, titled and dated in pencil on print verso.  
(P2698RM)



20. **Ray MORTENSON** (b. 1944)  
Celanese Chemicals, Newark #1, 1979  
Gelatin silver print, printed 1979-1981  
Paper size: 10 5/8 x 12 7/8 inches  
Image size: 6 1/2 x 8 3/4 inches  
Signed, titled and dated in pencil on print verso.  
(P2697RM)



21. **Ray MORTENSON** (b. 1944)  
Campbell Foundry, Harrison, 1980  
Gelatin silver print, printed 1980-1981  
Paper size: 10 5/8 x 12 7/8 inches  
Image size: 6 1/2 x 8 3/4 inches  
Signed, titled and dated in pencil on print verso.  
(P2699RM)



22. **Ray MORTENSON** (b. 1944)  
Laurel Hill, Secaucus, 1979  
Gelatin silver print, printed 1979-1981  
Paper size: 10 5/8 x 12 7/8 inches  
Image size: 6 3/8 x 8 3/4 inches  
Signed, titled and dated in pencil on print verso.  
(P2712RM)



23. **Ray MORTENSON** (b. 1944)  
Harmon Cove, Secaucus, 1979  
Gelatin silver print, printed 1979-1981  
Paper size: 10 5/8 x 12 7/8 inches  
Image size: 6 1/2 x 8 3/4 inches  
Signed, titled and dated in pencil on print verso.  
(P2701RM)



24. **Ray MORTENSON** (b. 1944)  
Conrail Croxton Yards, Kearny, 1979  
Gelatin silver print, printed 1979-1981  
Paper size: 10 5/8 x 12 7/8 inches  
Image size: 6 1/2 x 8 3/4 inches  
Signed, titled and dated in pencil on print verso.  
(P2723RM)





25. **Ray MORTENSON** (b. 1944)  
Erie Lackawanna, Jersey City, 1980  
Gelatin silver print, printed 1980-1981  
Paper size: 10 5/8 x 12 7/8 inches  
Image size: 6 1/2 x 8 3/4 inches  
Signed, titled and dated in pencil on print verso.  
(P2703RM)



26. **Ray MORTENSON** (b. 1944)  
Alliance Color and Chemical, Newark, 1979  
Gelatin silver print, printed 1979-1981  
Paper size: 10 5/8 x 12 7/8 inches  
Image size: 6 1/2 x 8 3/4 inches  
Signed, titled and dated in pencil on print verso.  
(P2719RM)



27. **Ray MORTENSON** (b. 1944)  
Morris Companies, Secaucus, 1979  
Gelatin silver print, printed 1979-1981  
Paper size: 10 5/8 x 12 7/8 inches  
Image size: 6 1/2 x 8 3/4 inches  
Signed, titled and dated in pencil on print verso.  
(P2707RM)



28. **Ray MORTENSON** (b. 1944)  
Essex Generating Station, 1980  
Gelatin silver print, printed 1980-1981  
Paper size: 10 5/8 x 12 7/8 inches  
Image size: 6 1/2 x 8 3/4 inches  
Signed, titled and dated in pencil on print verso.  
(P2726RM)

