

L. PARKER STEPHENSON  
PHOTOGRAPHS

**COAST TO COAST**

May 19 – July 28, 2018

1. **MUNKACSI, Martin** (1896-1963)  
Bathing Beauties, Berlin, 1929  
Gelatin silver Estate print from 2008  
Ed. 16/40  
Paper size: 14 x 11 inches  
Image size: 12 x 9-3/8 inches  
Estate stamp with title, date, print date, edition and signature by Joan Munkacsi in pencil on print verso (P4101MM)
2. **YOORS, Jan** (1922-1977)  
Untitled (Manhattan from the Staten Island Ferry), 1960  
Gelatin silver Estate print from 2012  
Ed. 2/15  
Paper size: 11 x 14 inches  
Image size: 8 x 12 inches  
Estate stamp with estate signature, title, negative and negative dates and edition number in pencil on print (P0919JY)
3. **HINE, Lewis** (1874-1940)  
Albanian Woman from Italy, 1905  
Gelatin silver contact print, printed c. 1940s  
Paper and image size: 7 x 5 inches  
(P4102LH)
4. **YAMAWAKI, Iwao** (1898-1987)  
A Ship's Deck, 1930  
Vintage gelatin silver print  
Paper size: 7 x 9-3/8 inches  
Image size: 6-5/8 x 8-7/8 inches  
Signed in pencil on print verso  
(P4049IY)



5. **KEPES, Gyorgy** (1906-2001)  
Manadnock Steamer, c.1934  
Vintage gelatin silver print  
Mount size: 16 x 20 inches  
Image size: 10 x 14 ¼ inches  
Artist's stamp on mount verso  
(P0636GK)



6. **STERNBACH, Joni** (b. 1953)  
17.01.29 #4 Harteau Family Portrait, Oxnard, CA, 2017  
Unique wet collodion tintype  
Plate and image size: 11 x 14 inches  
Signed, titled and dated on plate verso  
(P4104JS)



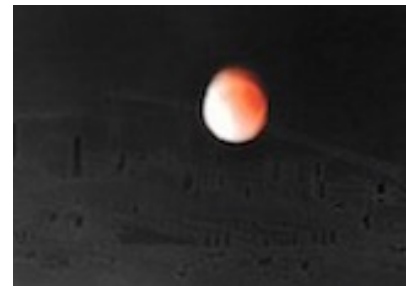
7. **DAVIES, John** (b. 1949)  
Druridge Bay, England, 1983  
Vintage gelatin silver print  
Paper size: 12 x 15-3/4 inches  
Image size: 9-3/4 x 14-1/4 inches  
Signed, titled, and dated in pencil on print verso  
(P4058JD)



8. **MORTENSON, Ray** (b. 1944)  
Jamestown, RI, 1998  
Vintage gelatin silver print  
Paper size: 16 x 20 inches  
Image size: 14 x 17-1/2 inches  
Signed in pencil on print verso  
(P4097RM)



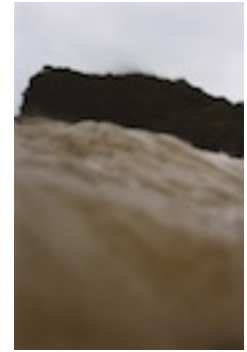
9. **KAWADA, Kikuji** (b. 1933)  
Fukushima 1site Nuclear Power Plant - NHKBS-TV, Tokyo, Lunar Partial Eclipse, from the series 2011-phenomena, 2011  
Digital pigment print, printed 2016  
Ed. 1/5  
Paper size: 16-1/2 x 23-1/2 inches  
Image size: 15-1/4 x 21-1/4 inches  
Signed, titled and dated in pencil on print verso; blind stamp on print recto  
(P2606KK)



10. **FEIRET, G. P.** (1924-2009)  
Untitled (water abstraction), c. 1960s-1970s  
Vintage gelatin silver print  
Paper and image size: 7 x 9-3/8 inches  
Signed in ink and stamped on recto; photographer's  
stamp stamped four times on verso  
(P4105AS)



11. **NARAHASHI, Asako** (b. 1959)  
Shirarahama (from the series "half awake, half asleep in  
the water"), 2006  
Chromogenic print  
Ed. 1/12  
Paper size: 22-5/16 x 14-5/8 inches  
Image size: 22 x 14-3/8 inches  
Signed, titled, dated and editioned on print verso  
(P4098GF)



12. **COBURN, Alvin Langdon** (1882-1966)  
Brooklyn Bridge, From a Rooftop, 1909  
Vintage photogravure  
Mount size: 16 x 11-3/4 inches  
Image size: 7-3/4 x 5-5/8 inches  
Mounted onto grey page. From Coburn's portfolio New  
York (1910), published by London: Duckworth & Co and  
New York: Brentano's.  
(P4103AC)



13. **RESNICK, Marcia** (b. 1950)  
Untitled (from "See" series #26), 1974  
Vintage gelatin silver print  
Paper size: 16 x 20 inches  
Image size: 12 x 17-3/4 inches  
Signed and titled on print recto; signed, titled and dated  
in pencil on print verso  
(P4097RM)



14. **HAMMOND, Scott** (b. 1981)  
Chicago, IL, 2006  
Unique Polaroid 600 print  
Paper size: 4-1/4 x 3-1/2 inches  
Image size: 3-1/8 x 3 inches  
Signed and titled in marker on print verso  
(P2234HD)



15. **SONCK, Jacques** (b. 1949)  
Untitled (De Panne), 1987  
Gelatin silver print, printed later  
Ed. 2/15  
Paper size: 16 x 12 inches  
Image size: 12 x 8 inches  
Signed and editioned n pencil on print verso  
(P2647JS)



16. **KONTTINEN, Sirkka-Liisa** (b. 1948)  
Hawthorn Hive, Afternoon 2 December, 1999  
Digital pigment print  
Ed. 3/15  
Paper size: 16 x 20 inches  
Image size: 11-7/8 x 15-1/4 inches  
Signed, titled, dated with print date and editioned in  
pencil on print verso  
(P4060SLK)



17. **LUSKACOVA, Marketa** (b. 1944)  
Whitley Bay, On the Promenade, 1978  
Vintage gelatin silver print  
Paper size: 20 x 16 inches  
Image size: 16-7/8 x 11 inches  
Signed, titled, and dated in ink on print verso  
(P4085WW)



18. **STEPHENSON, Rob**  
Siasconset, 2015  
Digital c-print mounted to dibond, printed 2018  
Ed. 1/10 + 2AP  
Paper and image size: 19 x 23 7/8 inches  
Signed in ink on label , with title, date and edition numer  
on mount verso  
(P4118RS)



19. **KRAUSE, George** (b. 1937)  
Newspaper, 1974  
Vintage gelatin silver print  
Paper size: 7 x 8-5/8 inches  
Image size: 4-3/4sk x 5-7/8 inches  
Signed and dated in pencil on print recto  
(P0843GK)

