

L. PARKER STEPHENSON  
PHOTOGRAPHS

**AIPAD 2018**

April 4 -8<sup>th</sup>, 2018

1. **BURKE, Bill** (b. 1943)  
Coal Mine, Morgan County, Kentucky, 1974  
Gelatin silver print, printed c. 1979-1980  
Image and print size: 14 ½ x 18 7/8 inches  
Titled and dated in ink on print recto; signed and dated  
in pencil; "Good Art" and "Actual Signature" stamps on  
print verso  
(P4069BB)



2. **COHEN, John** (b. 1932)  
Two Miners Having Tea During Break at Mine Office,  
Littlebourne Kent, 1955  
Vintage gelatin silver print  
Mount and image: 9 ¼ x 13 1/2 inches  
Signed and dated in pencil on mount verso  
(P4048JC)



3. **DAVIES, John** (b. 1949)  
Reddish Vale, Stockport, 1988  
Gelatin silver print, printed 2006  
Ed. 2/3  
Paper size: 30 5/8 x 41 ¾ inches  
Image size: 28 x 40 ½ inches  
Signed, titled, dated with print date and editioned in  
pencil on recto  
(P3067JD)



4. **DAVIES, John** (b. 1949)  
Ladbroke Grove, London, 1985  
Gelatin silver print, printed later  
Ed. 3/12  
Paper size: 20 x 24 inches  
Image size: 15 x 22 1/2 inches  
Signed, titled, and editioned in pencil on print recto  
(P4072JD)



5. **DAVIES, John** (b. 1949)  
Stalybridge, Cheshire, 1983  
Vintage gelatin silver print  
Ed. 4/12  
Paper size: 20 x 24 inches  
Image size: 15 x 22 1/4 inches  
Signed, titled, and editioned in pencil on print recto  
(P4073JD)



6. **DAVIES, John** (b. 1949)  
Westgate, Newcastle-upon-Tyne, 2001  
Vintage gelatin silver print  
Ed. 4/12  
Paper size: 20 x 24 inches  
Image size: 17 x 22 7/8 inches  
Signed, titled, and editioned in pencil on print recto;  
signed in pencil on print verso  
(P3076JD)



7. **DAVIES, John** (b. 1949)  
Runcorn Bridges, Cheshire, 1986  
Gelatin silver print, printed later  
Ed. 7/12  
Paper size: 20 x 24 inches  
Image size: 15 3/4 x 22 3/4 inches  
Signed, titled, and editioned in pencil on print recto;  
signed in pencil on print verso  
(P4071JD)



8. **EVANS, Walker** (1903-1975)  
Coal Dock Workers, Havana, 1933  
Gelatin silver print, printed 1974  
Ed. 67/75  
Mount size: 19 3/4 x 14 3/4 inches  
Image size: 11 3/4 x 9 inches  
Signed and editioned in pencil on print recto  
(P4067WE)



9. **KILLIP, Chris Killip** (b. 1946)  
Rocker and Rosie Going Home, Seacoal Beach,  
Lynemouth, Northumberland, 1984  
Gelatin silver print, printed 2010  
Paper size: 20 x 24 inches  
Image size: 15 x 18 3/8 inches  
Signed, titled, and dated with print dates in pencil on  
print verso  
(P0900CK)



10. **KONTTINEN, Sirkka-Liisa** (b. 1948)  
Hawthorn Hive, Morning 8 August, 2000  
Archival pigment print  
Ed. 1/15  
Paper size: 16 x 20 inches  
Image size: 11 7/8 x 15 1/4 inches  
Signed, titled, dated and editioned in pencil on print  
verso  
(P4061SLK)



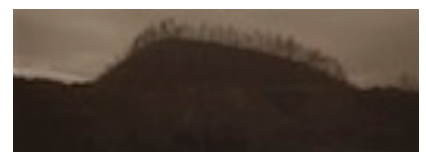
11. **KONTTINEN, Sirkka-Liisa** (b. 1948)  
Hawthorn Hive, Afternoon 2 December, 1999  
Archival pigment print  
Ed. 3/15  
Paper size: 16 x 20 inches  
Image size: 11 7/8 x 15 1/4 inches  
Signed, titled, dated and editioned in pencil on print  
verso  
(P4060SLK)



12. **WORMS, Witho** (b. 1959)  
Freyning-Merlebach, France, 2006-2011  
Carbon print made with coal from site  
Ed. 3/5  
Paper size: 7 1/2 x 22 5/8 inches  
Image size: 5 1/2 x 19 1/8 inches  
Signed, titled, dated and editioned in pencil on print  
verso  
(P3083WW)



13. **WORMS, Witho** (b. 1959)  
Rybnik, Poland, 2006-2011  
Carbon print made with coal from site  
Ed. 3/5  
Paper size: 9 x 22 7/8 inches  
Image size: 7 1/8 x 19 1/8 inches  
Signed, titled, and editioned in pencil on print verso  
(P3079WW)



14. **WORMS, Witho** (b. 1959)  
Gilly, Belgium, 2006-2011  
Carbon print made with coal from site  
Ed. 5/5  
Paper size: 10 3/8 x 20 7/8 inches  
Image size: 7 7/8 x 18 1/4 inches  
Signed, titled and editioned in pencil on verso  
(P3080WW)



15. **WORMS, Witho** (b. 1959)  
Merthyr Tydfil, Wales, 2006-2011  
Carbon print made with coal from site  
Ed/ 3/5  
Paper size: 9 x 21 3/8 inches  
Image size: 7 1/8 x 18 3/4 inches  
Signed, titled and editioned in pencil on print verso  
(P3081WW)



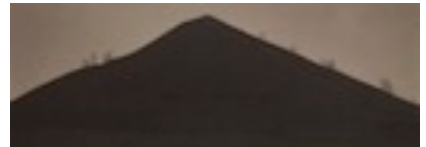
16. **WORMS, Witho** (b. 1959)  
Marcinelle, Belgium, 2006-2011  
Carbon print made with coal from site  
Ed. 4/5  
Paper size: 9 7/8 x 22 7/8 inches  
Image size: 7 1/8 x 19 1/8 inches  
Signed, titled and editioned in pencil on verso  
(P3086WW)



17. **WORMS, Witho** (b. 1959)  
Loos-en-Gohelle, France, 2006-2011  
Carbon print made with coal from site  
Ed. 5/5  
Paper size: 10 7/8 x 23 inches  
Image size: 7 1/8 x 19 1/8 inches  
Signed, titled and editioned in pencil on print verso  
(P3078WW)



18. **WORMS, Witho** (b. 1959)  
Dourges 1, France, 2006-2011  
Carbon print made with coal from site  
Ed. 5/5  
Paper size: 10 1/2 x 21 3/8 inches  
Image size: 7 1/2 x 19 1/8 inches  
Signed, titled, and editioned in pencil on print verso  
(P3085WW)



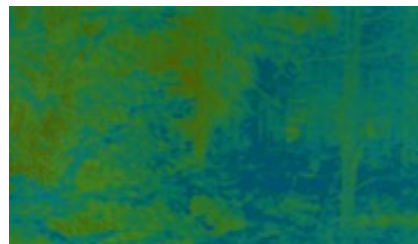
19. **WORMS, Witho** (b. 1959)  
Tylorstown, Wales, 2006-2011  
Carbon print made with coal from site  
Ed. 3/5  
Paper size: 8 ¼ x 21 1/4 inches  
Image size: 6 3/8 x 19 1/8 inches  
Signed, titled and editioned in pencil on verso  
(P3084WW)



20. **WORMS, Witho** (b. 1959)  
Rydultowy (Anna), Poland, 2006-2011  
Carbon print made with coal from site  
Ed. 4/5  
Paper size: 8 ½ x 22 5/8 inches  
Image size: 6 ¼ x 19 1/4 inches  
Signed, titled and editioned in pencil on print verso  
(P3082WW)



21. **WORMS, Witho** (b. 1959)  
Sweden 065 YBB, 2013-2016  
Unique three layer carbon print  
Print size: 13 ¾ x 21 1/2 inches  
Image size: 11 1/8 x 19 inches  
Signed, titled and dated in pencil on print verso.  
(P4028WW)



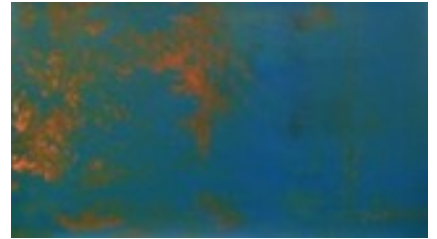
21. **WORMS, Witho** (b. 1959)  
France 103 BRB, 2013-2016  
Unique three layer carbon print  
Print size: 13 ¾ x 21 1/2 inches  
Image size: 11 1/8 x 19 inches  
Signed, titled and dated in pencil on print verso.  
(P3045WW)



23. **WORMS, Witho** (b. 1959)  
Finland 021 WBB, 2013-2016  
Unique three layer carbon print  
Print size: 13 1/2 x 21 1/2 inches  
Image size: 11 1/8 x 18 7/8 inches  
Signed, titled and dated in pencil on print verso.  
(P4022WW)



24. **WORMS, Witho** (b. 1959)  
Sweden 065 RYB, 2013-2016  
Unique three layer carbon print  
Print size: 13  $\frac{3}{4}$  x 21  $\frac{1}{2}$  inches  
Image size: 11  $\frac{1}{8}$  x 19 inches  
Signed, titled and dated in pencil on print verso.  
(P4029WW)



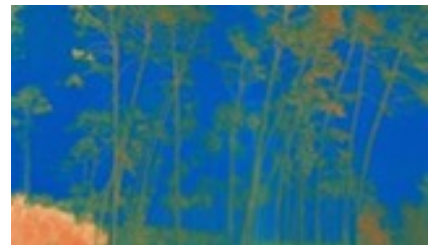
25. **WORMS, Witho** (b. 1959)  
Sweden 054 BYB, 2013-2016  
Unique three layer carbon print  
Print size: 13  $\frac{3}{4}$  x 21  $\frac{1}{2}$  inches  
Image size: 11  $\frac{1}{8}$  x 19  $\frac{1}{4}$  inches  
Signed, titled and dated in pencil on print verso.  
(P3042WW)



26. **WORMS, Witho** (b. 1959)  
Belgium 213 RBY, 2013-2016  
Unique three layer carbon print  
Print size: 13  $\frac{3}{4}$  x 21  $\frac{1}{2}$  inches  
Image size: 11  $\frac{1}{8}$  x 19  $\frac{1}{4}$  inches  
Signed, titled and dated in pencil on print verso.  
(P3043WW)



27. **WORMS, Witho** (b. 1959)  
France 134 YRB, 2013-2016  
Unique three layer carbon print  
Print size: 13  $\frac{3}{4}$  x 21  $\frac{1}{2}$  inches  
Image size: 11  $\frac{1}{8}$  x 19 inches  
Signed, titled and dated in pencil on print verso.  
(P4027WW)



28. **WORMS, Witho** (b. 1959)  
Finland 034 BWB, 2013  
Unique three layer carbon print  
Print size: 13  $\frac{3}{4}$  x 21  $\frac{1}{2}$  inches  
Image size: 11  $\frac{1}{8}$  x 19 inches  
Signed, titled and dated in pencil on print verso.  
(P3040WW)





29. **WORMS, Witho** (b. 1959)  
Sweden 065 YBY, 2013  
Unique three layer carbon print  
Print size: 13 <sup>3</sup>/<sub>4</sub> x 21 <sup>1</sup>/<sub>2</sub> inches  
Image size: 11 <sup>1</sup>/<sub>8</sub> x 19 inches  
Signed, titled and dated in pencil on print verso.  
(P3044WW)



30. **WORMS, Witho** (b. 1959)  
Belgium 202 YRB, 2013  
Unique three layer carbon print  
Print size: 13 <sup>1</sup>/<sub>2</sub> x 21 <sup>1</sup>/<sub>2</sub> inches  
Image size: 11 <sup>1</sup>/<sub>8</sub> x 19 <sup>1</sup>/<sub>8</sub> inches  
Signed, titled and dated in pencil on print verso.  
(P4020WW)



31. **WORMS, Witho** (b. 1959)  
Belgium 213 RRY, 2013-2016  
Unique three layer carbon print  
Print size: 13 <sup>1</sup>/<sub>2</sub> x 21 <sup>1</sup>/<sub>2</sub> inches  
Image size: 11 x 19 <sup>1</sup>/<sub>8</sub> inches  
Signed, titled and dated in pencil on print verso.  
(P4026WW)



32. **WORMS, Witho** (b. 1959)  
Belgium 213 YBR - A, 2013-2016  
Unique three layer carbon print  
Print size: 13 <sup>1</sup>/<sub>2</sub> x 21 <sup>1</sup>/<sub>2</sub> inches  
Image size: 11 x 19 <sup>1</sup>/<sub>8</sub> inches  
Signed, titled and dated in pencil on print verso.  
(P4026WW)

