

L. PARKER STEPHENSON
PHOTOGRAPHS

COAST TO COAST

May 19 – July 28, 2018

1. **MUNKACSI, Martin** (1896-1963)
Bathing Beauties, Berlin, 1929
Gelatin silver Estate print from 2008
Ed. 16/40
Paper size: 14 x 11 inches
Image size: 12 x 9-3/8 inches
Estate stamp with title, date, print date, edition and signature by Joan Munkacsi in pencil on print verso (P4101MM)
2. **YOORS, Jan** (1922-1977)
Untitled (Manhattan from the Staten Island Ferry), 1960
Gelatin silver Estate print from 2012
Ed. 2/15
Paper size: 11 x 14 inches
Image size: 8 x 12 inches
Estate stamp with estate signature, title, negative and negative dates and edition number in pencil on print (P0919JY)
3. **HINE, Lewis** (1874-1940)
Albanian Woman from Italy, 1905
Gelatin silver contact print, printed c. 1940s
Paper and image size: 7 x 5 inches
(P4102LH)
4. **YAMAWAKI, Iwao** (1898-1987)
A Ship's Deck, 1930
Vintage gelatin silver print
Paper size: 7 x 9-3/8 inches
Image size: 6-5/8 x 8-7/8 inches
Signed in pencil on print verso
(P4049IY)



5. **KEPES, Gyorgy** (1906-2001)
Manadnock Steamer, c.1934
Vintage gelatin silver print
Mount size: 16 x 20 inches
Image size: 10 x 14 ¼ inches
Artist's stamp on mount verso
(P0636GK)



6. **STERNBACH, Joni** (b. 1953)
17.01.29 #4 Harteau Family Portrait, Oxnard, CA, 2017
Unique wet collodion tintype
Plate and image size: 11 x 14 inches
Signed, titled and dated on plate verso
(P4104JS)



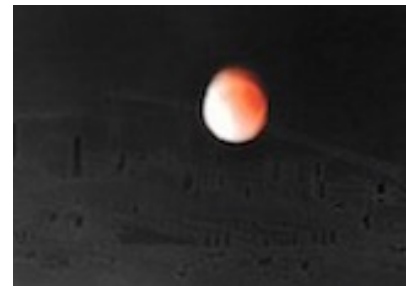
7. **DAVIES, John** (b. 1949)
Druridge Bay, England, 1983
Vintage gelatin silver print
Paper size: 12 x 15-3/4 inches
Image size: 9-3/4 x 14-1/4 inches
Signed, titled, and dated in pencil on print verso
(P4058JD)



8. **MORTENSON, Ray** (b. 1944)
Jamestown, RI, 1998
Vintage gelatin silver print
Paper size: 16 x 20 inches
Image size: 14 x 17-1/2 inches
Signed in pencil on print verso
(P4097RM)



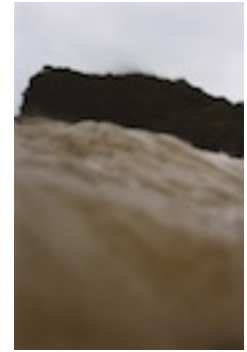
9. **KAWADA, Kikuji** (b. 1933)
Fukushima 1site Nuclear Power Plant - NHKBS-TV, Tokyo, Lunar Partial Eclipse, from the series 2011-phenomena, 2011
Digital pigment print, printed 2016
Ed. 1/5
Paper size: 16-1/2 x 23-1/2 inches
Image size: 15-1/4 x 21-1/4 inches
Signed, titled and dated in pencil on print verso; blind stamp on print recto
(P2606KK)



10. **FEIRET, G. P.** (1924-2009)
Untitled (water abstraction), c. 1960s-1970s
Vintage gelatin silver print
Paper and image size: 7 x 9-3/8 inches
Signed in ink and stamped on recto; photographer's
stamp stamped four times on verso
(P4105AS)



11. **NARAHASHI, Asako** (b. 1959)
Shirarahama (from the series "half awake, half asleep in
the water"), 2006
Chromogenic print
Ed. 1/12
Paper size: 22-5/16 x 14-5/8 inches
Image size: 22 x 14-3/8 inches
Signed, titled, dated and editioned on print verso
(P4098GF)



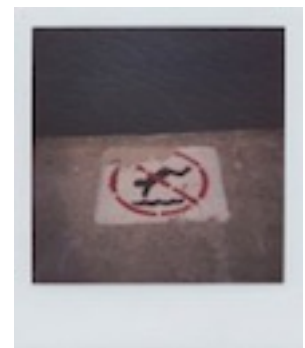
12. **COBURN, Alvin Langdon** (1882-1966)
Brooklyn Bridge, From a Rooftop, 1909
Vintage photogravure
Mount size: 16 x 11-3/4 inches
Image size: 7-3/4 x 5-5/8 inches
Mounted onto grey page. From Coburn's portfolio New
York (1910), published by London: Duckworth & Co and
New York: Brentano's.
(P4103AC)



13. **RESNICK, Marcia** (b. 1950)
Untitled (from "See" series #26), 1974
Vintage gelatin silver print
Paper size: 16 x 20 inches
Image size: 12 x 17-3/4 inches
Signed and titled on print recto; signed, titled and dated
in pencil on print verso
(P4097RM)



14. **HAMMOND, Scott** (b. 1981)
Chicago, IL, 2006
Unique Polaroid 600 print
Paper size: 4-1/4 x 3-1/2 inches
Image size: 3-1/8 x 3 inches
Signed and titled in marker on print verso
(P2234HD)



15. **SONCK, Jacques** (b. 1949)
Untitled (De Panne), 1987
Gelatin silver print, printed later
Ed. 2/15
Paper size: 16 x 12 inches
Image size: 12 x 8 inches
Signed and editioned in pencil on print verso
(P2647JS)



16. **KONTTINEN, Sirkka-Liisa** (b. 1948)
Hawthorn Hive, Afternoon 2 December, 1999
Digital pigment print
Ed. 3/15
Paper size: 16 x 20 inches
Image size: 11-7/8 x 15-1/4 inches
Signed, titled, dated with print date and editioned in
pencil on print verso
(P4060SLK)



17. **LUSKACOVA, Marketa** (b. 1944)
Whitley Bay, On the Promenade, 1978
Vintage gelatin silver print
Paper size: 20 x 16 inches
Image size: 16-7/8 x 11 inches
Signed, titled, and dated in ink on print verso
(P4085WW)



18. **STEPHENSON, Rob**
Siasconset, 2015
Digital c-print mounted to dibond, printed 2018
Ed. 1/10 + 2AP
Paper and image size: 19 x 23 7/8 inches
Signed in ink on label, with title, date and edition number
on mount verso
(P4118RS)



19. **KRAUSE, George** (b. 1937)
Newspaper, 1974
Vintage gelatin silver print
Paper size: 7 x 8-5/8 inches
Image size: 4-3/4sk x 5-7/8 inches
Signed and dated in pencil on print recto
(P0843GK)

